

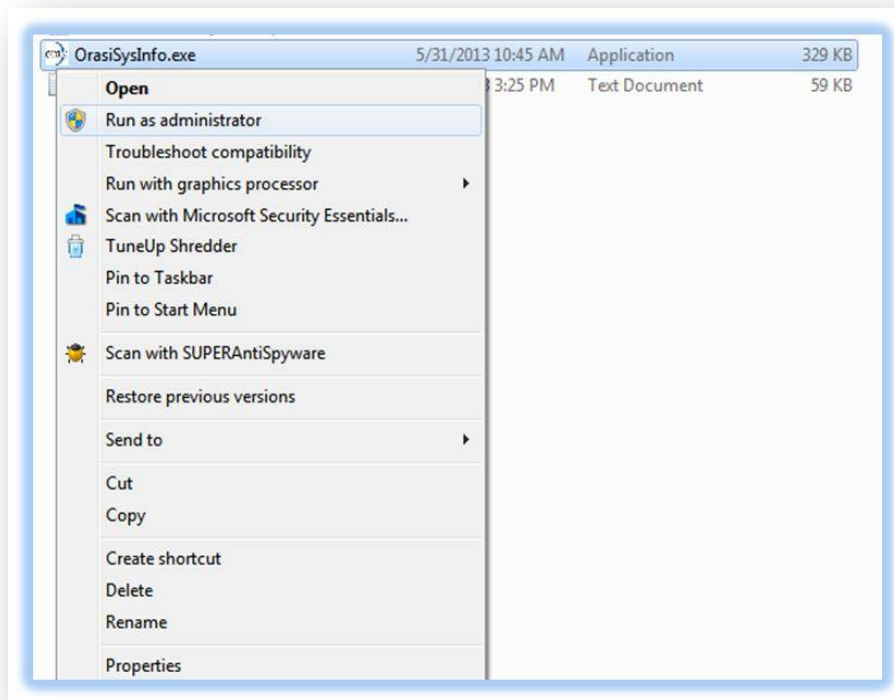


Orasi SysInfo (OSI) Utility Instruction Guide

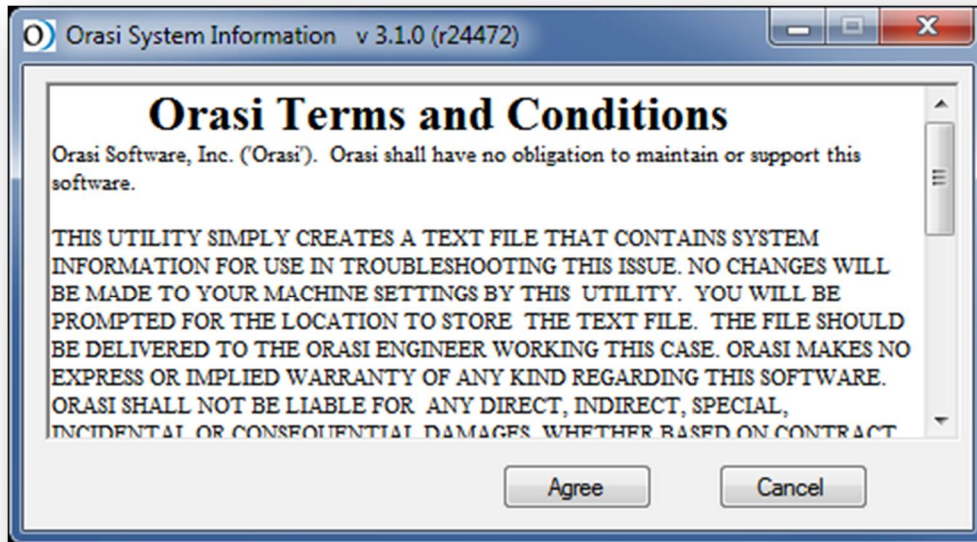
1. Download the Orasi SysInfo tool by following the link below:

<http://www.orasi.com/support/orasi-system-information/>

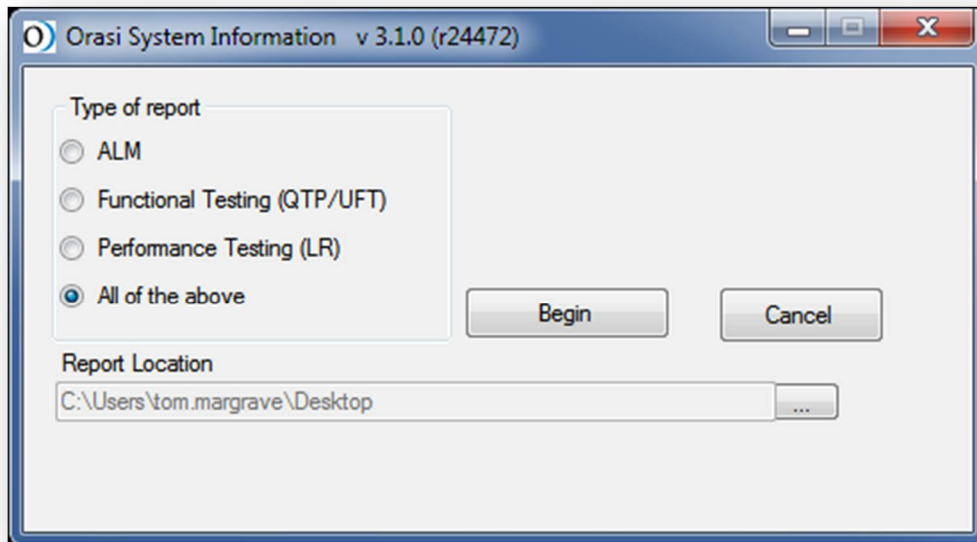
2. Once downloaded, unzip the file if necessary.
3. Right-click on the OrasiSysInfo.exe file and select "Run as Administrator".



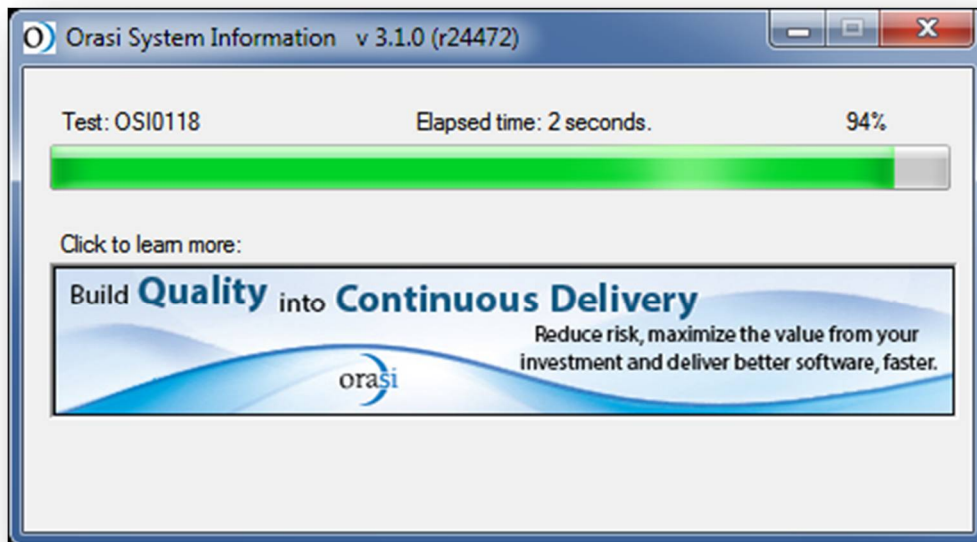
4. The program will open and display the Terms and Conditions. Read the notice and if you are in agreement, click the "Yes" button.



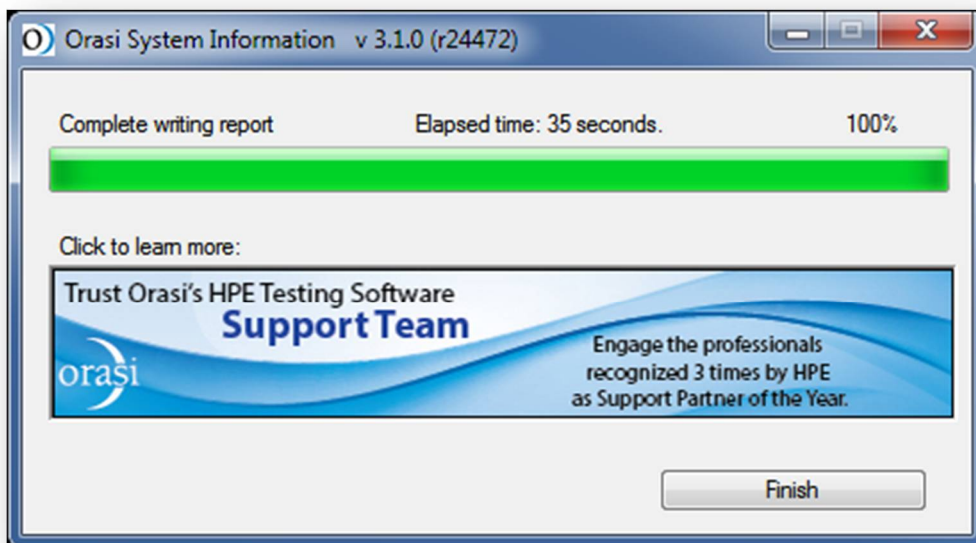
5. The "Type of Report" selection popup will be displayed. Indicate the type of information to gather by selecting the appropriate radio button, then select the location of the report. When ready to begin data collection click on the "Begin" button.



As the program runs, the "Orasi System Information" popup will display the status of the program as it collects your system information.





6. Browser will open and display the file "OrasiSysInfo.htm" so you can review the information collected. You may edit and save this file if you have any issues with the contents of the data collected. Please remember that the more information we have about your environment, the better we will be able to determine the root cause of your technical issues. Once you have finished reviewing the data, close browser.
7. Close the Orasi Information Tool by pressing the "Finish" button.



8. Upon completion, **please upload a copy of OrasiSysInfo.zip (which contains Orasi.htm, Orasi.txt and GroupPolicy.txt) to your support case.** Upon receipt of this data file, we will review the information and offer advice towards the resolution of your issues.

Note: If more details is required on a report item then click the link next to the item title. Clicking on the item will bring up a new page with details of all OSI test items.

.NET versions installed (OSI0115)  

Version	Details	Service Pack
v2.0.50727	2.0.50727.4927	2
v3.0	3.0.30729.4926	2
v3.5	3.5.30729.4926	1
v4		
Client	4.6.01038	
Full	4.6.01038	
v4.0		
Client	4.0.0.0	

What does this mean?